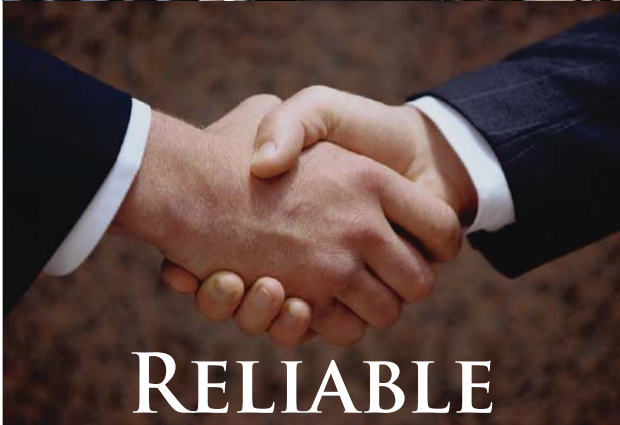


**BAKER FIRST**  
COMMERCIAL REAL ESTATE SERVICES



**RESPONSIVE**



**RELIABLE**



**RESULTS**

BROKERAGE - DEVELOPMENT -  
CONSTRUCTION - PROPERTY MANAGEMENT -  
INVESTMENTS

**107TH & HUDSON**  
OKLAHOMA CITY, OK 73114

TWO PARCELS FOR SALE:  
\$7,500 / \$99,000

PROPERTY INFORMATION:

TYPE: LAND

TERMS: SALE

LAND SIZE AVAILABLE:

76,000SF MOL

92,000SF MOL

PROPERTY HIGHLIGHTS:

- OWNER WILL BUILD TO SUIT
- 1/2 MILE WEST OF BROADWAY EXT

DEMOGRAPHICS

RADIUS:	POPULATION	HOUSEHOLD INCOME:
1	5,358	\$46,152
3	51,690	\$61,452
5	140,572	\$73,355

FOR MORE INFORMATION CONTACT:

ANNA CONRADY

E. CONRADYA@BAKERFIRST.COM

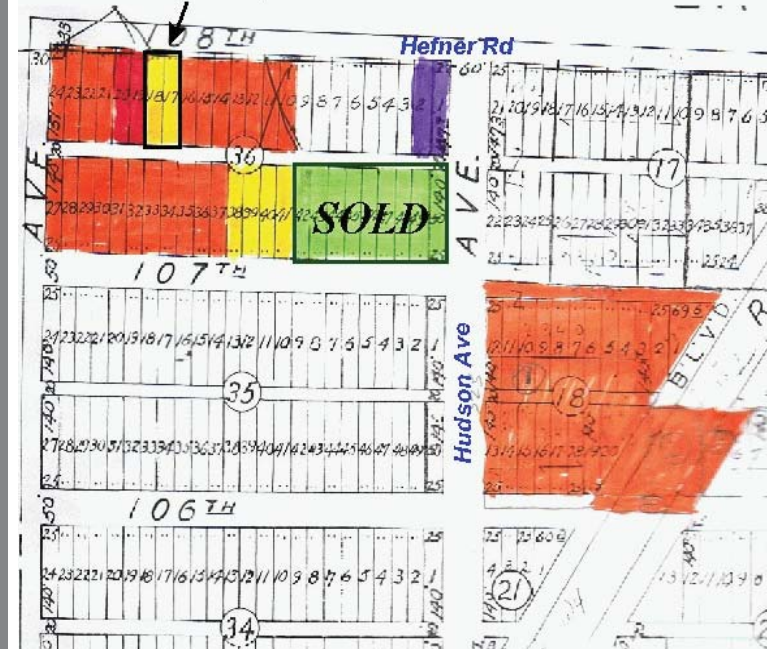
P. 405.947.7200

F. 405.947.7270

W. WWW.BAKERFIRST.COM



**SITE**  
Lots 17 & 18  
7,500 sf parcel



# Oklahoma City



Pied Piper Park

**BAKER  
FIRST**

Commercial Real Estate Services

