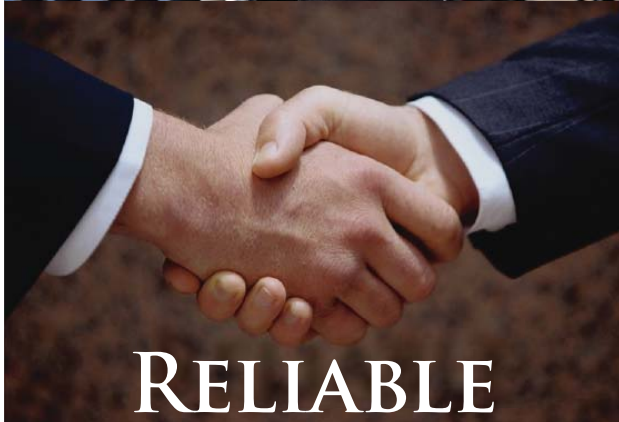


BAKER FIRST  
COMMERCIAL REAL ESTATE SERVICES



RESPONSIVE



RELIABLE



RESULTS

BROKERAGE - DEVELOPMENT -  
CONSTRUCTION - PROPERTY MANAGEMENT -  
INVESTMENTS

3910 N.W. 36TH STREET  
OKLAHOMA CITY, OK 73112

FOR SALE: \$79,000

PROPERTY INFORMATION:

TYPE: LAND  
TERMS: SALE  
LAND SIZE AVAILABLE: 28,100SF MOL

PROPERTY HIGHLIGHTS:

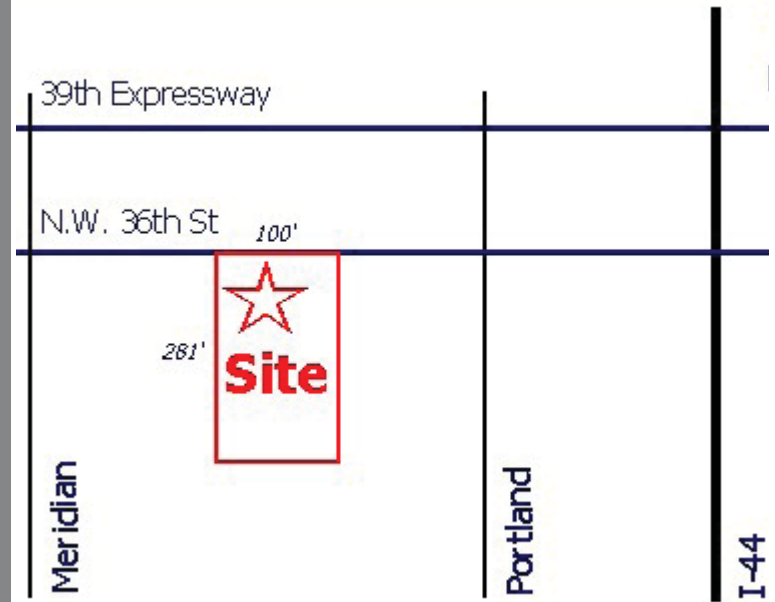
- 100' FRONTAGE ON 36TH STREET
- LOT - 281' DEPTH
- GREAT ACCESS TO I-44
- DEVELOPING OFFICE AREA

DEMOGRAPHICS

RADIUS:	POPULATION	HOUSEHOLD INCOME:
1	11,695	\$49,596
3	106,970	\$50,102
5	211,402	\$54,109

FOR MORE INFORMATION CONTACT:

ANNA CONRADY  
E. CONRADYA@BAKERFIRST.COM  
P. 405.947.7200  
F. 405.947.7270  
W. WWW.BAKERFIRST.COM



## DOWNTOWN OKLAHOMA CITY, OK



## 20 LARGEST AREA EMPLOYERS:

1. STATE OF OKLAHOMA:	38,000
2. TINKER AIR FORCE BASE:	27,000
3. US POSTAL SERVICE:	8,700
4. INTEGRIS HEALTH:	7,000
5. OKLA. CITY PUBLIC SCHOOLS:	5,900
6. FAA AERONAUTICAL CENTER:	5,600
7. CHESAPEAKE ENERGY:	4,900
8. DEVON ENERGY:	4,600
9. CITY OF OKLA. CITY:	4,700
10. AT&T:	4,600
11. OU HEALTH SERVICES CENTER:	4,200
12. OU MEDICAL CENTER:	3,250
13. OGE ENERGY:	3,132
14. MERCY HEALTH:	2,750
15. HOBBY LOBBY STORES:	2,522
16. UPS:	2,300
17. DELL:	2,100
18. COX COMMUNICATIONS:	2,000
19. DEACONESS HOSPITAL:	1,900
20. OKLAHOMA COUNTY:	1,800

\*THIS LIST WAS COMPILED BY THE ECONOMIC DEVELOPMENT DIVISION OF THE GREATER OKLAHOMA CITY CHAMBER FROM A VARIETY OF SOURCES.

